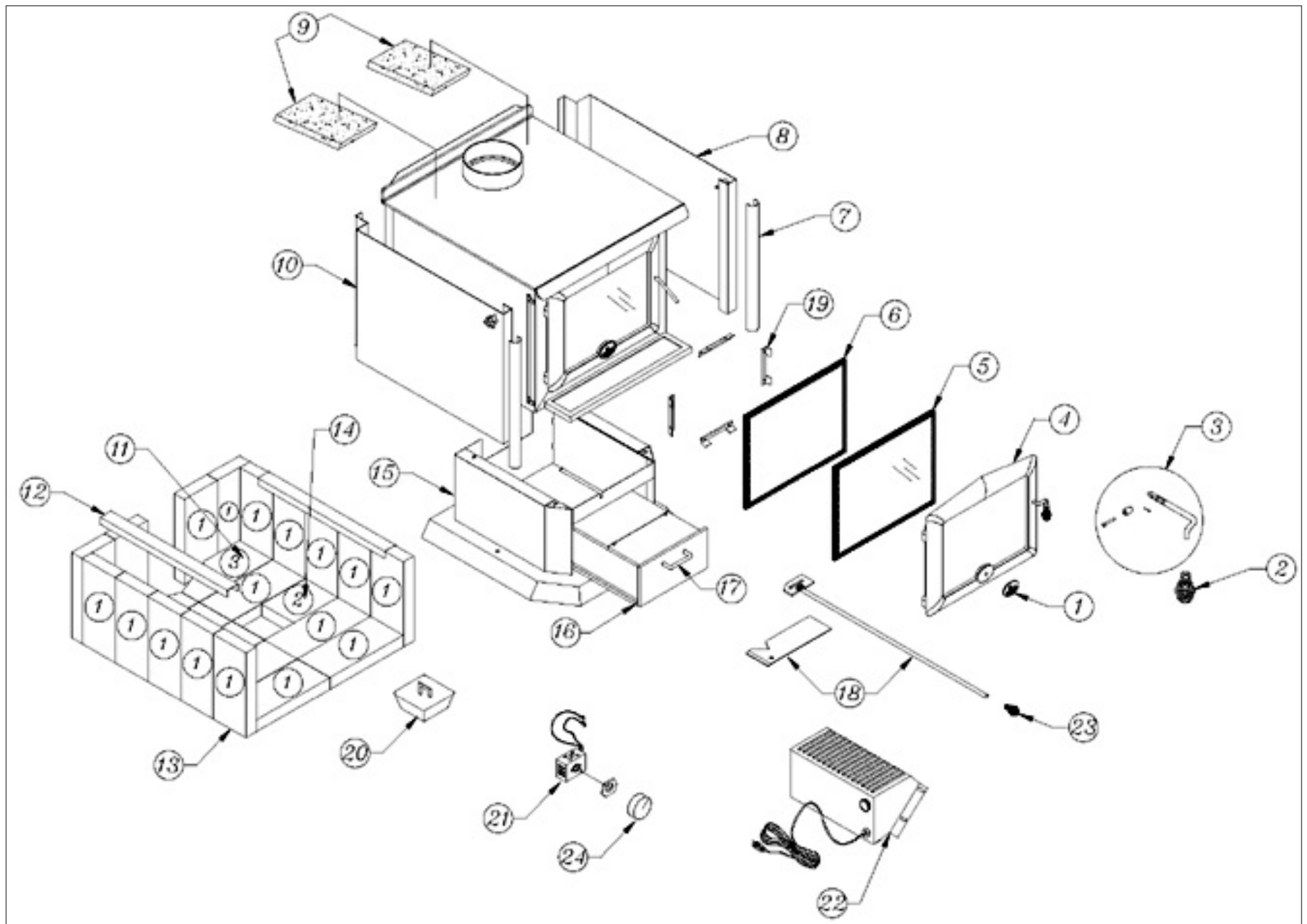


# OSBURN 2300 - Spare Parts



Ref	Part ID	Description	Qty Per	Ref	Part ID	Description	Qty Per
1	30450	Brushed nickel osburn logo	1	12	PL09524	Brick retainer	2
2	AC07860	Gold plated handle 1/2	1	13	29015	Refractory brick 1.25" x 4" x 9"	21
2	AC07867	(10-985-202)chrome spring handle 1/2	1	14	PL36022	Refractory brick 4 x 5-3/8	1
2	AC07868	Coil handle 1/2 black	1	16	SE35047	Pedestal model ash drawer	1
3	AC07900	Door handle kit osburn 1500-2300	1	17	28060	Brass drawer handle 3" 3/4	1
3	AC09185	Door latch kit	1	17	28061	Nickel drawer handle 3" 3/4	1
4	SE24076	Cast iron door black with handle	1	17	VP00054	Brass drawer handle 4"	1
4	SE24076PG	Cast iron door gold with handle	1	17	VP00055	Nickel drawer handle 4"	1
4	SE24076PN	Osburn 2300 nickel door	1	18	SE30028	Air control plate	1
5	SE30082	Glass and gasket 14 5/8	1	19	PL30207	Glass retainer	4
6	AC06100	Door glue & gasket kit(1/4	1	20	SE16059	Ash dump cap (ep001)	1
7	PL39060-01	Column brushed nickel trim	2	21	44080	Rheostat	1
7	PL39060	Column brass trim (4S008)	1	22	44073	Blower 115v	1
8	PL30163	Rh side decorative panel	1	22	44086	Blower 240v	1
9	29005	Refractory brick 6" x 8" x 1.25"	2	23	242	Draft regulator nickel plated coil handle 1/4	1
10	PL30164	Lh side decorative panel	1	23	AC07861	Gold plated spring handle 1/4	1
11	VP00029	Refractory brick 4 x 9 x 2 1/16 x 4 3/4	2	24	44085	Rheostat knob	1