



# 1000 MODEL ASH HEARTH

## Specifications

### Floor Protector Construction (Hearth)

For minimum Floor protector dimensions refer to following data. The floor protector must extend at least 300mm beyond the door opening of the heater and 200mm to each side of the door opening. (Floor protector specification (AS/NZS2918: 2001) minimum floor protector only eg. Ceramic tile glued to a heat sensitive floor.) A provision has been made in the pedestal for seismic restrain bolting through the two holes through the hearth and floor.

### Clearance Requirements

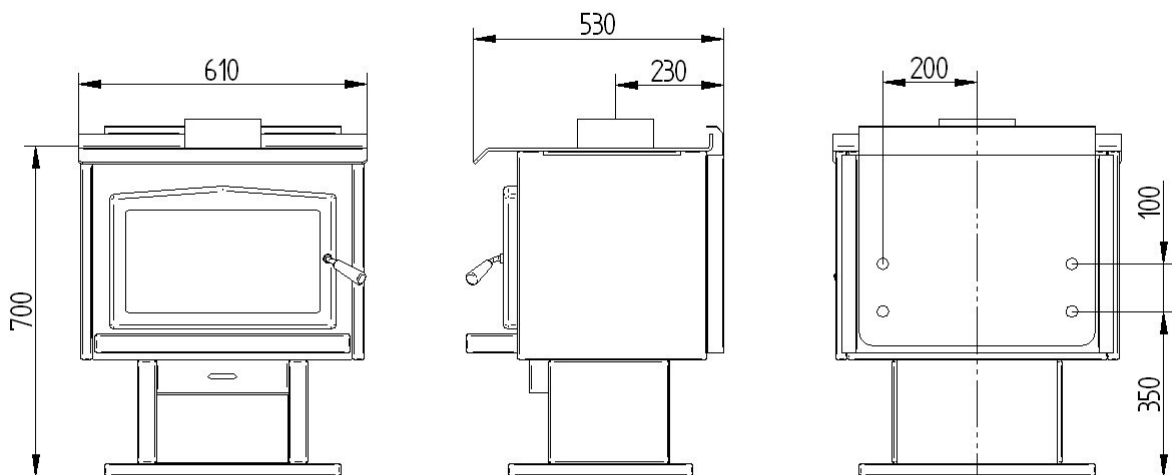
The 1000 Ash Hearth model has been tested to the Australian/New Zealand Standard AS/NZS 2918:2001 and all installations must be in accordance with the minimum clearances to combustibles indicated in these instructions.

The minimum clearances to combustibles may be reduced if the combustible walls are shielded with an approved non-combustible material. Details of suitable shielding materials and appropriate clearance reduction factors are present in Section 3 of AS/NZS 2918:2001.

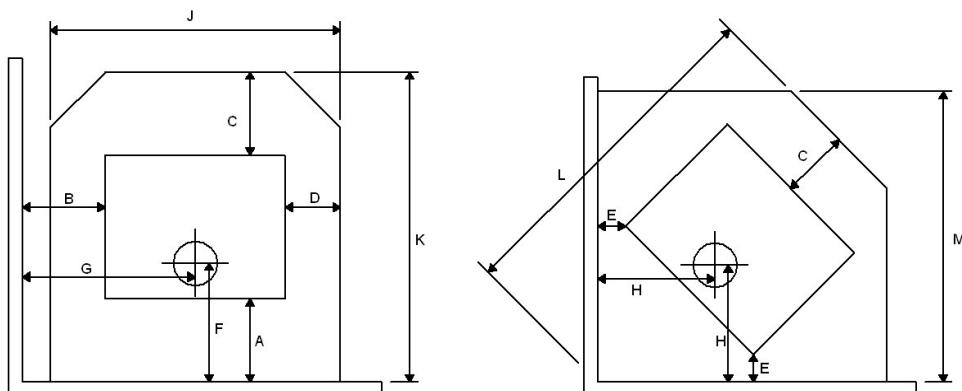
Minimum clearances to combustibles in millimetres AS/NZS 2918:2001

NEW ZEALAND	A	B	C	D	E	F	G	H	J	K	L	M
With flue shield	100	356	300	105	152	330	651	530	800	900	1350	1203

\* Note : All specifications are subject to change or variation without notification.



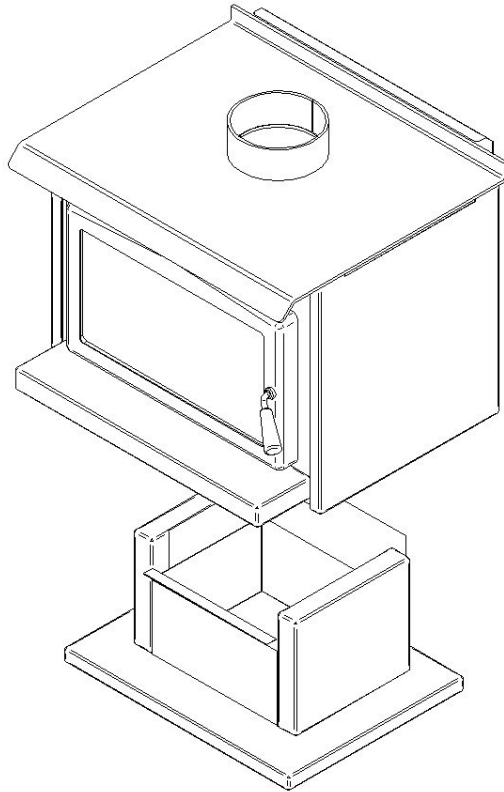
\*Hearth projection measured from door opening



## METAL FAB INDUSTRIES 2004 LTD

38 Harris Road, East Tamaki \* PO Box 58-473, Greenmount \* Auckland, New Zealand  
Ph: (09) 274 8265 \* Fax: (09) 274 8472 \* Email: sales@metalfab.co.nz

# Assembly of the 1000 Ash Hearth Osburn Wood Fire



- 1 Remove the contents of your chosen base option from its carton. The leg option needs assembly using nuts and bolts supplied
- 2 Lower the fire onto the assembled pedestal unit.
- 3 Line up the pedestal box holes with the threaded holes in the hearth legs and secure fire to pedestal unit.
- 4 Place assembled fire into position and seismic restrain to the floor.

