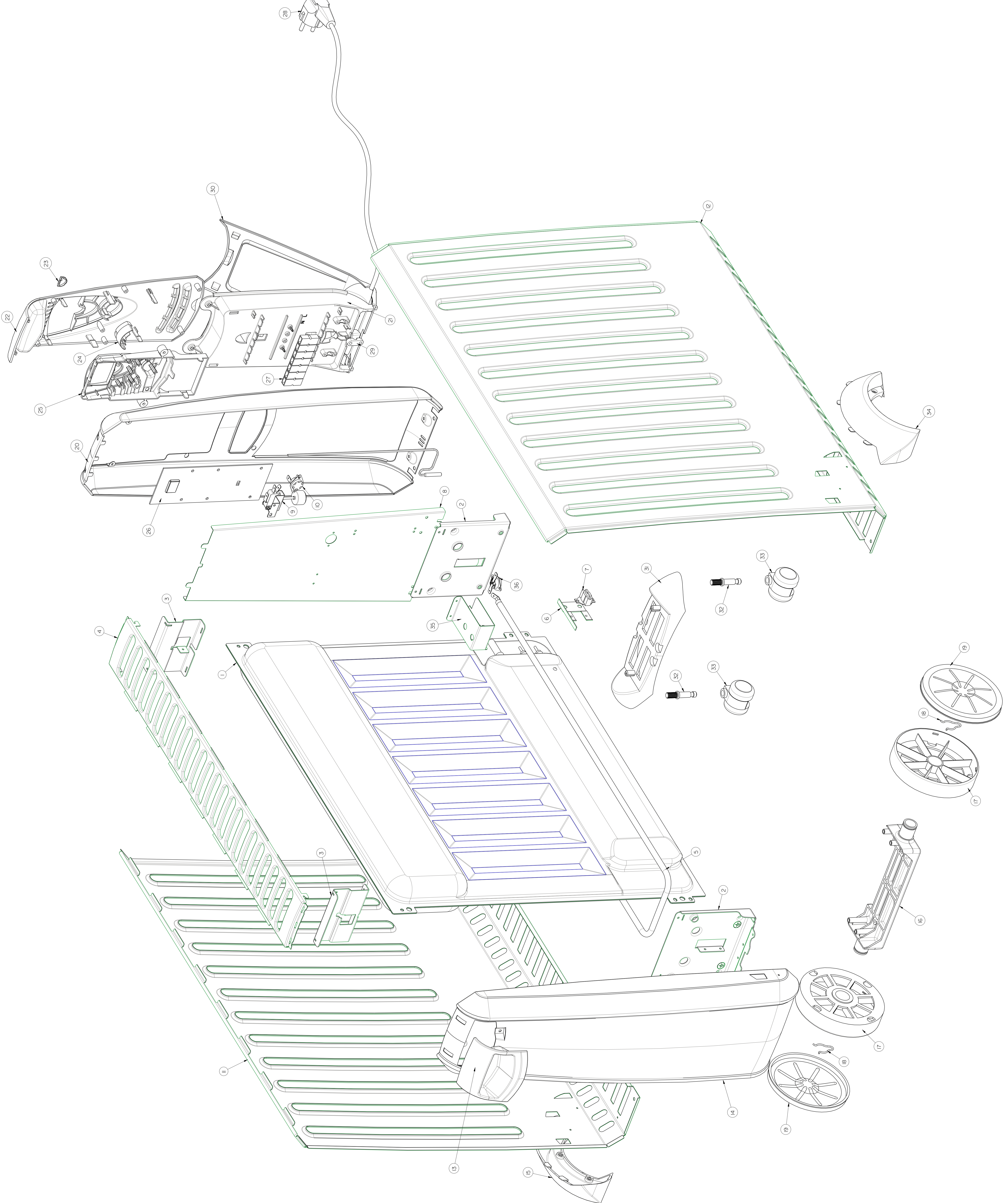


Dimplex ROF3ECC EXPLODED VIEW & PARTS LIST



ITEM No.	No. OF	DESCRIPTION	PART No.
1	1	Inner Oil Panel Assembly	22/50024/O
2	2	Bottom Corner Support Bracket	1/80157/O
3	2	Top Corner Support Bracket	1/80208/O
4	1	Top Air Outlet Grille	1/80200/O
5	1	1000W Boost Element	3/16544/O
6	1	Oil Panel Cut-out Mounting Bracket	1/80225/O
7	1	Ceramic Cut-out	03/12352/O
8	1	Control End Baffle	1/80216/O
9	1	Tilt Switch	03/16561/O
10	1	End Baffle 1/2" Disc Cut-out	03/16554/O
11	1	Front RH Panel	1/80217/O
12	1	Front LH Panel	1/80199/O
13	1	Handle	1/80235/O
14	1	Free End Panel	1/80142/O
15	1	RH Wheel Arch	1/80237/O
16	1	Rear Wheel Axle	1/80230/O
17	2	Rear Wheel	1/80234/O
18	2	Spring Clip	1/80262/O
19	2	Wheel Hub Cap	1/80246/O
20	1	Control End Panel Electronic Version	1/80228/O
21	1	Cable Storage Moulding	1/80231/O
22	1	Control Moulding Electronic Version	1/80220/O
23	1	Receiver Lens	1/80250/O
24	1	Neon Lens	1/80223/O
25	1	PCB Cover Moulding	1/80219/O
26	1	Electronic Control PCB & Sensor	03/21977/O
27	1	6-Way Insulated Connector	03/16551/O
28	1	Plug & Cord Set	03/16564/O
29	1	Cable Clamp	03/16562/O
30	1	Cable Storage Cover	1/80232/O
31	1	Castor Trim	1/80236/O
32	2	Castor Shaft	03/16555/O
33	2	Castor	03/16563/O
34	1	LH Wheel Arch	1/80218/O
35	1	Temperature Limiter Mounting Bracket	1/80251/O
36	1	Temperature Limiter	03/16560/O