

This drawing is the Property of METAL FAB INDUSTRIES LTD. All dimensions are outside/outside unless otherwise stated

Item Number	Document Number	Title	Material	Quantity
1	METAC004	MET FIRE BOX ASSEMBLY		1
2	MET00075	MET BRICK RETAINER PIN	10MM BMS FREE MACHINING	8
3*	MET00176	MET BASE HEAT SHIELD	Zintec 0.8mm	1
4	MET00079	MET CATCH PIN	8MM BMS FREE MACHINING	1
5	MET00109	MET BAFFLE	HOT ROLL 6.0mm	1
6	MET00135	MET WETBACK COVER PLATE	Hot Rolled 3.0 mm	4
7	FSFLATWSHR5MM	FLAT WASHER 5 MM	Purchased	2
8	METAC190	MET DOOR HINGE SUB ASSY.		1
9	METAC011	ASH SHELF SUB ASSY.		1
10	MIC00083	LOGAIRE METRO AIR SLIDE SPACER	7/8" BMS FREE MACHINING	2
11	MET00036	METRO-2 AIR SLIDE	Cold Rolled 1.6mm	1
12*	MET00038	MET REAR HEAT SHIELD	Zintec 0.8mm	1
13*	MET00016	MET AIR SLIDE COVER	ENAMEL 1.2mm	1
14*	MET00012	MET REAR PANEL	Zintec 0.8mm	1
15	HBA00129	HBA AIR DEFLECTOR SPACER	16MM BMS FREE MACHINING	2
16	METAC730	MET DOOR ASSEMBLY		1
17	MET00740	METRO BADGE	Purchased	1
18	FSBOLTM6X35ZP	bolT m6 x 35 zinc plated	Purchased	5
19	MET00376	MET DOOR HANDLE - WOODEN	Wood	1
20	MET00375	MET AIR CONTROL KNOB	PLASTIC	1
21	MET00354	METRO CONCRETE BRICK	CONCRETE BRICK	2
22	METAC102	MET AIR DEFLECTOR ASSEMBLY		1
23	MET00035	MET BAFFLE WASHER	Cold Rolled 3.0 mm	3
24	MET00741	MET PROMATE BAFFLE	PROMATE	1
25	F-M6-HN-ZP	HEX NUT M6 ZP	Purchased	3
26	MTR00007	MTR SIDE PANEL R/H	Enamel 2.0	1
27	MTR00006	MTR SIDE PANEL L/H	Enamel 2.0mm	1
28*	MET00003	MET TOP GRILL	Enamel 1.6mm	1

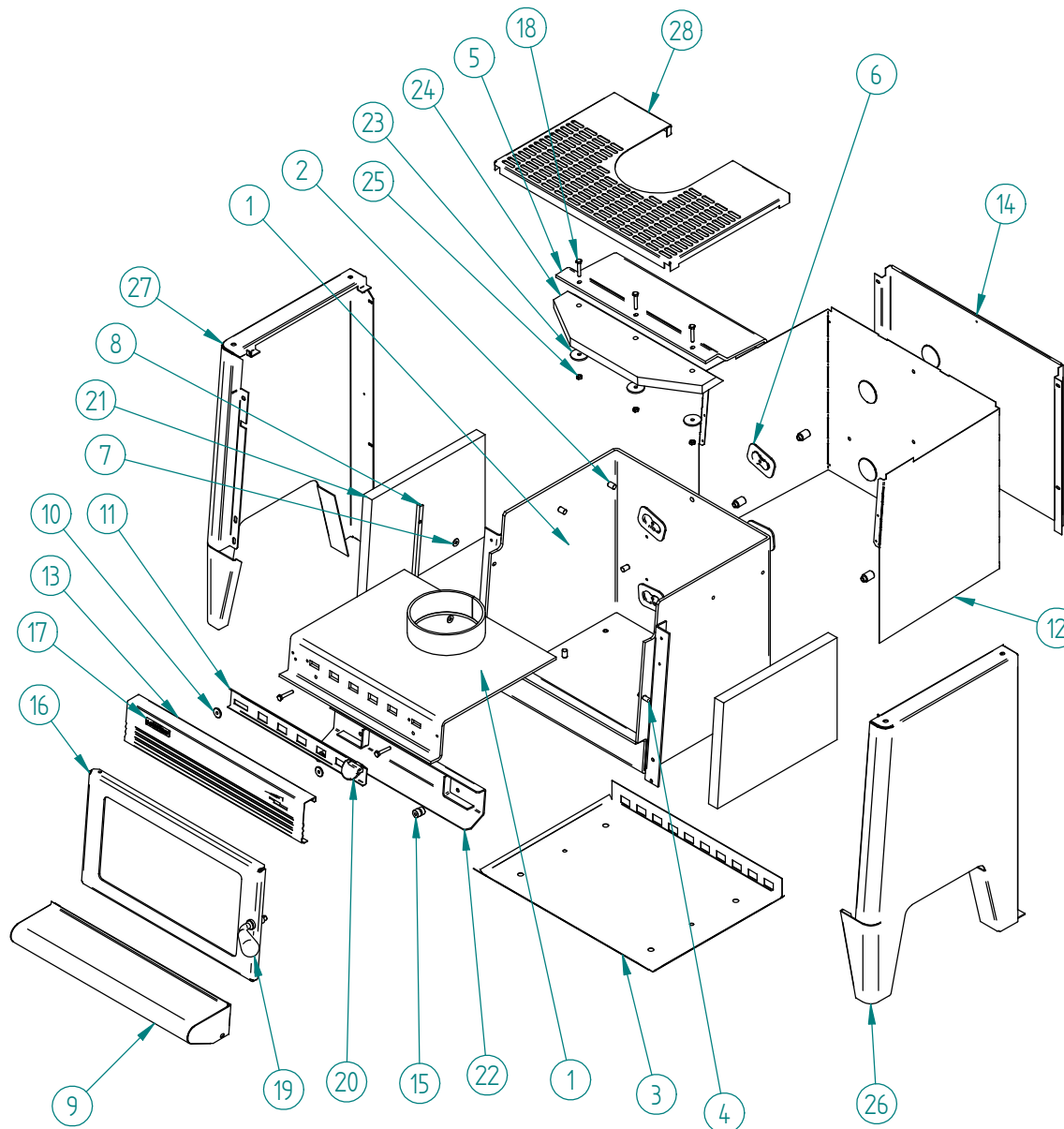
Weight = 0.000 kg

PART NUMBER : MTR ASSY

Amendment	Date	By

REVISION LEVEL :

Tolerances Unless Specified  
 Decimal Places 0 +/- 0.5  
 0.0 +/- 0.1  
 0.00 +/- 0.05



**METAL FAB INDUSTRIES LTD**  
 38 HARRIS ROAD, EAST TAMAKI, AUCKLAND, NEW ZEALAND  
 Ph 09 274 8265, Fax 09 274 8472, Email : engdept@metalfab.co.nz

Customer : PIONEER	Drawing No:	Date : 29/07/05	Drawn By: MR	Checked By :
Part Name : MTR ASSEMBLY	Material :	Finish : Name?Finish		